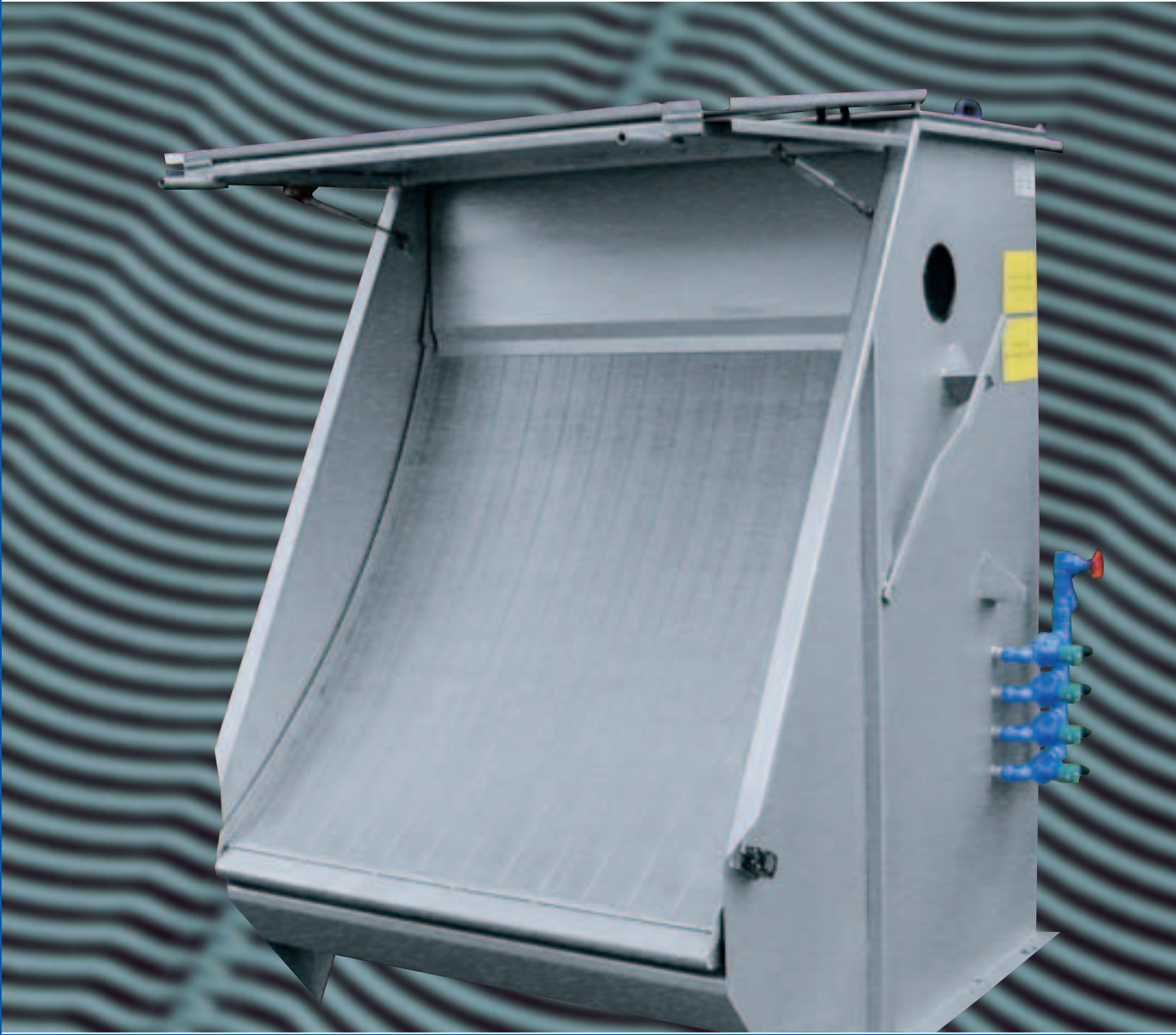


PASSAVANT NOGGERATH



Hydroscreen HS High-Capacity Static Screen

Products & Service

LIQUID-/SOLID SEPARATION

Hydroscreen High-Capacity Static Screen

This special static separation system without self-cleaning function is suitable for a variety of different applications in industrial and municipal water and waste water treatment.

Function

The solids/liquid mixture enters into the headbox. The buffer function of the headbox reduces the turbulences of the incoming solids/liquid mixture to a minimum distributing the solid matter homogeneously in the complete liquid. The solids/liquid mixture reaches the screen panel via an overflow weir and is distributed across the whole width of the screen panel by means of a swing baffle. The mechanically cleaned liquid drains through the wedgewire down into the outlet chamber where it is evacuated via the outlet connection. The solids accumulate on the surface of the screen panel and roll down by gravity to the solids discharge mounted at the bottom of screen panel.

Technical Data (Dimensions in mm)

Model	Depth	Width	Height
HS 18	1000	558	1550
HS 36	1000	1015	1550
HS 48	1500	1340	2130
HS 72	1506	1950	2130
HS 120	1524	3150	2134

(All dimensions refer to sizes of basic units without covers and spray water devices)

Standard

- Machine frame with inlet and outlet chamber
- Drain connection
- Swiveling wedgewire screen panel
- All components made of material DIN mtl. no.1.4301 (AISI 304)

Option

- Wider wedgewire openings available
- Inlet and outlet connection with aluminum loose flange
- Hinged cover with gas pressure damper
- Flushing device on rear side
- Stainless steel frame, DIN mtl. no. 1.4571 (AISI 316 Ti)
- Stainless steel wedgewire screen, DIN mtl. no. 1.4435 (AISI 316 L)
- Stainless steel cover, DIN mtl. no 1.4571 (AISI 316 Ti)

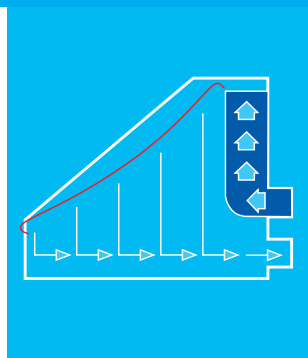
Fields of Application

- Waste water pretreatment, fine screening
- Pretreatment of total effluent
- Product/fibre recovery

Advantages

- SIMPLE INSTALLATION
- LOW OPERATING COSTS
- THE BI-WAVE WEDGEWIRE DESIGN GUARANTEES A HIGHER THROUGHPUT CAPACITY OF 30% COMPARED TO THE THROUGHPUT CAPACITY OF OTHER CONVENTIONAL STATIC SCREENS
- SCREENING OPENINGS OF 0.25 TO 2.5 MM
- THROUGHPUT CAPACITY OF UP TO 600 M³/H
- FULL ENCAPSULATION AVAILABLE
- PIVOTING SCREEN PANEL (NOT ON ALL MODELS)

1 Functional Sketch



Passavant-Noggerath Products GmbH
Branch Ahnsen
Feldstraße 2
31708 Ahnsen, Germany

Phone +49 5722 - 882 - 0
Fax +49 5722 - 882 - 282
www.passavant-noggerath.de
info@passavant-noggerath.de